

NO'PA SKO'SIAWEY  
MTMO'TAQNEY  
WJIT ETLAQATIMKL AQQ  
WEJI-WTUTE'KEMK.

# IKA'TEKEMK, SULIEWEY AQQ KI'L



Nikanite'te'n ta'n koqoey nuta'n tesikiskik  
ke'sk mu ewe'wmu'n ksulieweym wjit  
ika'tekemkl.



Ta'n ketu' tl-we'wmn  
ksulieweym

**MAW-KLU'K TELA'TEKEMK**

# NE'SISKL KOQOE'L KIS WIJE'WTES TA'N WIJE'WTIS TA'N KETU' TL-WE'WMN KSULIEWEYM

Etekl ne'siskl kisi-wije'mumkl kulaman ma' atawtik we'wmu'nn ika'tekemkl jel ta'n telawtik tepawtukwen.

## 1. L'te'n ta'n ketu' tl-we'wmn ksulieweym te's tepknuset.

L'tu'n ta'n tel-we'wmumk ksulieweym te's tepknuset apoqnmultew kjijitun ta'n eliaq ksulieweym. Kisi-we'wtes ta'n ewikasik kulaman kjijitutes telawtik pek watu'n aqq telawtik tettuwen.

Msit koqoey wi'kites ta'n apnkitmn weja'tekemk mawi-mko'tik nkutey kikuow, ta'n teli-epsmin ki'k aqq teli-ala'timk, mawte'mamk aqq apankitmumk emqwatuumkewey wi'katiknji', jel ma'w apje'jk koqoey nkutey wikunapu, sulnalji'jl aqq miman. Ta'n teli-tetapu' wi'kmn na aji-wula'lultew ki'l.

## 2. Nikanite'te'n ta'n telawtik ketu' we'wmn wjit ika'tekemkl.

Ne'wt kisi-ankaptmn ta'n telawtik pek watu'n aqq telawtik tettuen na kisi-nikanite'tis ta'n telawtik weskunman wjit amaltia'kwemk. Nuta'tew ankite'tmn ta'n koqoey kesatm tel-lukwen, nkutey amalapimk, tu'a'timkl, pipukutimkl, wi'katiknn, amal-lukwen, ala'timk aqq ika'tekemkl. Msit ula koqoey amujpa wjiatew ta'n weskunman wjit amaltia'kwemk. Jiko'te'n ta'n telawtik we'wmn aqq jiklpa'sites kaqo'tmn ta'n telawtik kisutmn we'wtes.

## 3. Wije'wtis ta'n ketu' tl-we'wmn ksulieweym

Ta'n tujiw kisi-ankaptmn ta'n tel-we'wmn ksulieweym te's tepknuset, aqq kisutmn ta'n telawtik tepawtukwen wjit ika'tekemkl, na wije'wtes.

Naqamasiaq wije'wmumk ta'n ketu' tl-we'wmn ksulieweym pasik nespnmn ta'n telawtik kisutmn wjit ika'tekemkl.



# KELU'KL EKINUA'TAQNN WIJE'WMUMKL WJIT TA'N KETU' TL-WE'WMN KSULIEWEYM

Nikansute'n ta'n telawtik ketu' we'wmn wjit  
ika'tekemkl ke's mu poqji-mila'siwun - aqq na pasik  
telawtik nespne'n.

Naqa'si ta'n tujiw kaqo'tmn kisutmu'tip we'wmn.

Nikanite'te'n ta'n telawtik ketu' wtute'mn – ika'n,  
wsua'te'n wette'mn aqq pun-mila'sites.

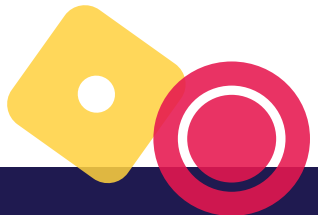
Naqa'masi we'wmn me' ksulieweym. Pasik  
taqqite'tes tepiaq ta'n ketu' we'wmn aqq nqalates  
ketalqite'kemkewey wi'katiknji'j kikuqaq.

Mukk maqituiw suliewey wjit ika'tekemkl.

## Suliewey ta'n kisutmn we'wmn wjit ika'tekemkl nuta'q wiaq-kitasin amaltia'kwemkewey-iktuk ta'n ewikasik ketu' tl-we'wmn ksulieweym.

### NKUTEY:

Ku'knmn \$200 te's tepknuset we'wmn wjit  
amaltia'kwemk, toqo ta'pu lien amalapimk (2  
amalapimk x \$15=\$30), tujiw ta'pu lien tu'a'timkl (2  
tu'a'timkl x \$20=40), na weskunman \$32.50 we'wmn  
te's newte' Ekntie'wimk pemiaq wjit ika'tekemkl.



Ika'tekemk na nkutey piluey  
koqoey amaltia'kwemk,  
keska'tuek. Na wjit amujpa  
nikanite'tmumk ta'n ketu'  
tl-we'wmn ksulieweym.  
Majukkwaatmn ula tel-  
wikasik na apoqnmultew  
mu atelk suliewey we'wmn  
ika'tekemkl aqq ta'n  
tepawtukwen.



Me' nuta'n kinua'taqn kwile'n kompu'tl-iktuk

**YOURBESTBET.ca**

# TA'N KETU' TL-WE'WMN KSULIEWEYM

## TALAWTIK PEKWATU'N TE'S TEPKNUSET

Talawtik elma'tun \_\_\_\_\_  
kaqi-mnkitekewuhsin \_\_\_\_\_  
Talawtik se'k pekwatu'n \_\_\_\_\_  
Talawtik Mawa'tumk Pekwatu'n \_\_\_\_\_

## KOQOEY APANKITMN TE'S TEPKNUSET

Talawtik etlqatmn \_\_\_\_\_  
Talawtik netutmask Kaplno'l \_\_\_\_\_  
Talawtik Wasoqnm ki'k \_\_\_\_\_  
Talawtik epsmn ki'k \_\_\_\_\_  
Talawtik elukwatmn ki'k \_\_\_\_\_  
Talawtik apankitmn Amalapimk  
aqq Internet \_\_\_\_\_  
Talawtik apankitmn Mattaqte'kney  
aqq Alketnmumk Mattaqte'kney \_\_\_\_\_  
Talawtik apankitmn wjit elmiaq na'talitpiemk  
(Wjit kilow aqq kikuow) \_\_\_\_\_

## TELI-ALA'TIMK

Talawtik apankitmn wjit kutapaqn \_\_\_\_\_  
Ta'sik kaqsmn alkwi'teken \_\_\_\_\_  
Talawtik apankitmn wjit elmiaq na'talitpiaq kutapaqn aqq  
wjit asite'lsuti alkwi'teken \_\_\_\_\_  
Elukwatmumk kutapaqn \_\_\_\_\_  
Piluey tepa'sin koqoey \_\_\_\_\_  
tel-mil-teskawen \_\_\_\_\_

## TEL-MIMAJIMK

Mijipjewey (we'kaw miman) \_\_\_\_\_  
Nepilsuti/Tel-maliamsimk \_\_\_\_\_  
Tapsun \_\_\_\_\_  
Nespimk \_\_\_\_\_  
Amaltia'kwemkewey suliewey \_\_\_\_\_  
lknmuetu'n/ Pestie'wa'taqn \_\_\_\_\_

## WI'KATIKN AQQ SULNALJI'JL

Wi'katikn aqq Sulnalji'jl \_\_\_\_\_  
Tewa'timk atatalumk, pi'tipo'kuo'ml, etli-ewsatalumk  
amalapimkl/ milita'mkl/teko'tmumkl/ pipukwemkl  
ika'tekemkl \_\_\_\_\_  
Pekwatelujik ika'tekemkewe'k \_\_\_\_\_  
Pitkmemkewe'l Mila'timkl \_\_\_\_\_  
Milita'mkl Etlqatimk \_\_\_\_\_  
Ika'tekemk Tu'a'timkl \_\_\_\_\_  
Ika'tekemk nikatno'timkl \_\_\_\_\_  
Bingo \_\_\_\_\_

## APANKITASIKL TE'S TEPKNUSET

Mawte'mamk/RRSP-l \_\_\_\_\_  
Apaji-apankitmumk kis-tuo'tekemk  
kisna emqatuimk \_\_\_\_\_  
Emqatuimkewey Wi'katiknji'j \_\_\_\_\_  
Teli-ksika'tuet nutewistoq \_\_\_\_\_  
ilsutekemkewey \_\_\_\_\_  
Piluey koqoey \_\_\_\_\_

## TALAWTIK MAWA'TUMK

### APANKITMN

Mukk atawtinuj telawtik Apankitmn aqq ta'n telawtik pekwatu'n.

# IKA'TEKEMKEWEY WI'KATIKN

Ula ika'tekemkewey wi'katikn apoqnmultew ankaptmn ta'n telawtik we'wmn aqq ta'n teli-pkiji mila'sin.

Ika'tes ika'tekemkewey wi'katikn ta'n naqamastek kulaman kisi-wi'kites ta'n tele'k naji mila'sin aqq ta'n telawtik ewe'wmn.

## NKUTEY:

Pitkmen \$10, ketalqite'mn \$2, jiptuk tluetes wette'm \$2, katu wetto'lk \$8. Mikwite'te'n, ika'tekemkewe'l na telitasikl atelk wsua'tunew ksulieweym jel mu ta'n telawtik apankitmi'tij. Ta'n pemi-aji pikwel mila'sin, na pemi atelk wtuto'ksites.

# TELAWTIK MAWA'TUMK

Kisi-wi'kites ta'n telawtik mawa'tumk, kulaman nmi-tutes ta'n telawtik kaqo'tmn teli-pkiji-milas'in.

## NA TELTEK TELAWTIK MAWA'TUMK:

| TE'SUKNIK       | TELAWTIK WETTE'MI<br>WETTO'KSI | TELAWTIK<br>MAWA'TEKEMK |
|-----------------|--------------------------------|-------------------------|
| Etquljuiku's 1  | +\$20                          | +\$20                   |
| Etquljuiku's 7  | -\$60                          | -\$40                   |
| Etquljuiku's 14 | -\$30                          | -\$70                   |
| Etquljuiku's 23 | +\$10                          | -\$60                   |
| Etquljuiku's 28 | -\$20                          | -\$80                   |
|                 | MAWA'TUMK                      | -\$80                   |

## TELAWTIK MAWA'TUMK:

| TE'SUKNIK | TELAWTIK WETTE'MI<br>WETTO'KSI | TELAWTIK<br>MAWA'TEKEMK |
|-----------|--------------------------------|-------------------------|
|           |                                |                         |
|           |                                |                         |
|           |                                |                         |
|           |                                |                         |
|           |                                |                         |

# NA TELTEK EWI'KMN TELI- IKA'TEKEMK

|                    |                |
|--------------------|----------------|
| TAMI:              | Pi'tipo'kuo'm  |
| TE'SUKNIK:         | Etquljuiku's 1 |
| TALI-PKITQATMN:    | 45 mins        |
| TELAWTIK KAQOTMN:  | \$10           |
| TELAWTIK WETTOLK:  | \$8            |
| TELAWTIK WETTE'MN: | \$2            |

## EWI'KMN TELI-IKA'TEKEMK

|                   |       |
|-------------------|-------|
| TAMI:             | _____ |
| TE'SUKNK:         | _____ |
| TALI-PKITQATMN:   | _____ |
| TELAWTIK KAQOTMN: | _____ |
| TELAWTIK WETTOLK: | _____ |
| TELAWTIK WETTE'MN | _____ |

## EWI'KMN TELI-IKA'TEKEMK

|                    |       |
|--------------------|-------|
| TAMI:              | _____ |
| TE'SUKNK:          | _____ |
| TALI-PKITQATMN:    | _____ |
| TELAWTIK KAQOTMN:  | _____ |
| TELAWTIK WETTOLK:  | _____ |
| TELAWTIK WETTE'MN: | _____ |

## EWI'KMN TELI-IKA'TEKEMK

|                    |       |
|--------------------|-------|
| TAMI:              | _____ |
| TE'SUKNK:          | _____ |
| TALI-PKITQATMN:    | _____ |
| TELAWTIK KAQOTMN:  | _____ |
| TELAWTIK WETTOLK:  | _____ |
| TELAWTIK WETTE'MN: | _____ |

Ula wi'katikn kis-wikasik wjit:

**NO'PA SKO'SIAEWEY  
MTMO'TAQNEY  
WJIT ETLAQATIMKL AQQ  
WEJI-WTUTE'KEMK.**

**APOQNMASUTI WJIT  
IKA'TEKEMK**

Apoqnmasuti wjit Ika'tekemk etekl kitk mattaqa'tekemk aqq kompu'tl apoqnmuksinew No'pa Sko'sia wenik aqq wikmawaq ta'n lukwaqna'lukwi'tij ika'tekemk. Mu keska'tuenuk apoqnmasuti aqq mu se'sa'sinuk aqq etek apoqnmasuti newtikiskik aqq newtitpa'q, l'uiknek na'kwekl te's ekntie'wimkewey.

Mattaqa'te'n 1-888-347-8888 kisna 711 [TTY] kisna kwile'n kompu'tl-iktuk  
- [gamblingsupportnetwork.ca](https://www.gamblingsupportnetwork.ca)

Me' nuta'n kinua'taqn kwile'n kompu'tl-iktuk

**YOURBESTBET.ca**